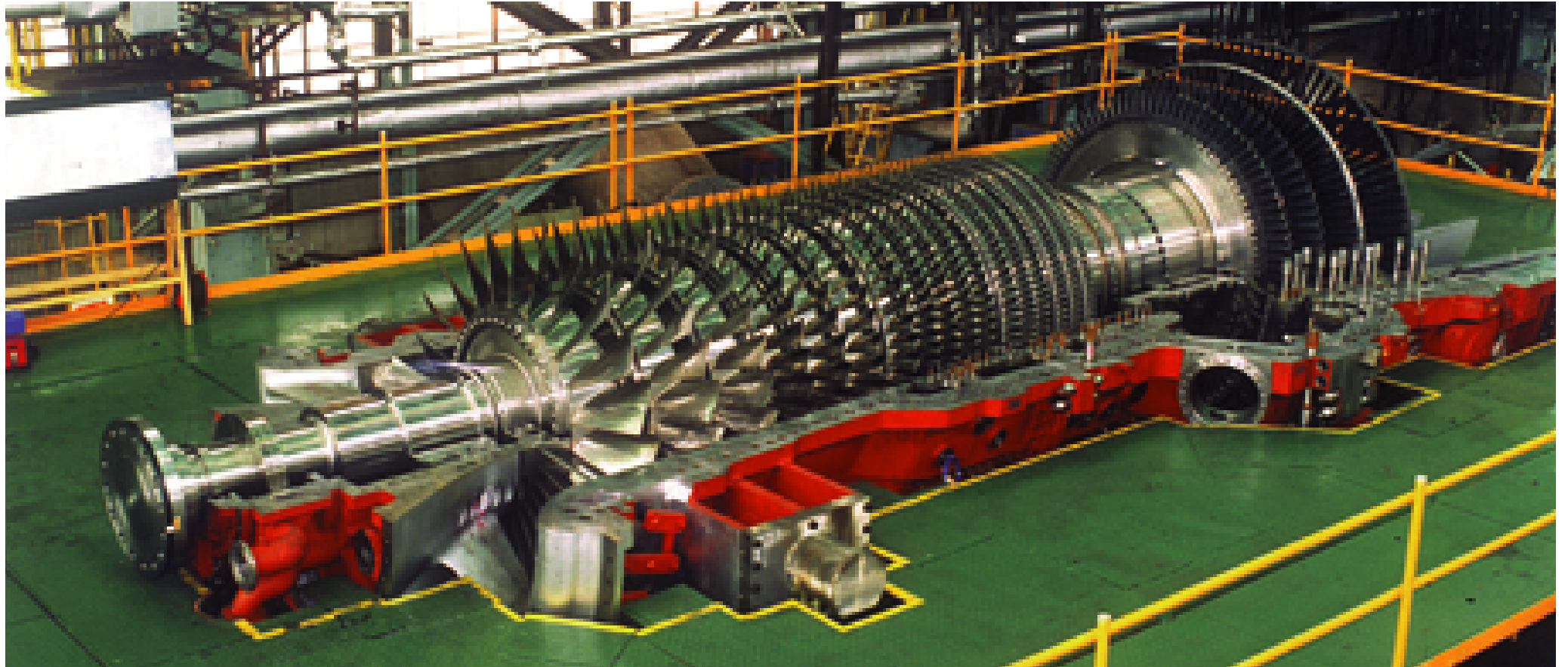


The Mitsubishi "F" Series: Proven Design for over 40 years

- Accumulated operating experience over 2 million hours on F series gas turbine
- Longest fleet leader operating experience over 70,000 hours



OPERATING EXPERIENCES of "F" SERIES GAS TURBINE M501F

CUSTOMER / SITE	No. of UNIT GT+ST	PLANT OUTPUT	STATUS OF OPERATION											OPE. HRS	START & STOP			
			1993	1994	1995	1996	1997	1998	1999	2000	2001	2002	2003					
OVERSEAS 1	2+1	450MW	#1														61,773	194
			#2														61,769	163
			#3														61,550	143
			#4														61,307	133
DOMESTIC 1	1+1	217.5MW	#1														55,831	1,619
			#2														55,810	1,420
			#3														48,458	1,656
			#4														48,242	1,593
DOMESTIC 2	3+1	670MW	#1														54,980	514
			#2														55,953	468
			#3														55,135	469
DOMESTIC 3	1+1	520MW	#1														41,487	188
			#2														53,910	259
DOMESTIC 4	1+1	243MW	#1														40,014	570
			#2														41,489	377
			#3														38,758	519
			#4														38,711	594
			#5														39,043	550
			#6														37,980	535
			#7														36,717	549
OVERSEAS 2	2+1	438MW	#1														20,641	182
			#2														20,483	112
OVERSEAS 3	2+1	498MW	#1														12,788	56
			#2														13,358	51
OVERSEAS 4	2+1	553.3MW	S-1														2,754	45
			S-2														2,597	34
OVERSEAS 5	2+1	553.3MW	A-1														2,572	37
			A-2														2,611	40
OVERSEAS 6	1+1	252MW	#1														743	43
OVERSEAS 7	1+1	197MW	#1														411	25
OVERSEAS 8	2+0	370MW	#1															
OVERSEAS 9	2+1	503MW	#1														12,112	104
			#2														12,500	96
OVERSEAS 10	3+0	691MW	#1															
OVERSEAS 11	1+1	282MW	#1														3,226	75
OVERSEAS 12	2+1	480MW	1-1															4
			1-2															0
			2-1															2
OVERSEAS 13	2+1	480MW	2-2															
OVERSEAS 14	2+1	500MW	#1															
OVERSEAS 15	2+1	450MW	#1															
OVERSEAS 16	3+1	1544MW	#1															
OVERSEAS 17	2+0	300MW	#1															
OVERSEAS 18	2+1	500MW	#1															
M501F TOTAL	58																1,090,589	13,334

OPERATING EXPERIENCE of "F" SERIES GAS TURBINE M701F

CUSTOMER SITE	No. of UNIT GT+ST	PLANT OUTPUT	STATUS OF OPERATION											OPE. HRS	START & STOP			
			1993	1994	1995	1996	1997	1998	1999	2000	2001	2002	2003					
OVERSEAS 1	2+1	650MW	#1														3,564	621
			#2														41,635	547
			#3														43,049	496
			#4														43,322	499
OVERSEAS 2	2+1	720MW	#5														43,988	462
			#6														31,495	474
OVERSEAS 3	1+1	370MW	#7														29,074	453
OVERSEAS 4	2+1	630MW	#8														31,201	136
			#9														28,780	247
DOMESTIC 1	1+1	360MW	#1														24,047	289
			#2														27,458	223
			#3														30,900	336
			#4														32,995	407
OVERSEAS 5	2+1	700MW	1-1														28,859	113
			1-2														28,076	90
			2-1														30,568	84
			2-2														28,068	37
OVERSEAS 6	1+1	400MW	#1														23,800	164
			#2														23,661	101
OVERSEAS 7	2+1	400MW	#3														23,559	98
OVERSEAS 8	2+1	793MW	#1														20,739	151
			#2														20,452	139
OVERSEAS 9	3+1	1090MW	#1														14,314	110
			#2														16,469	102
			#3														14,885	137
OVERSEAS 10	1+1	360MW	#1														19,859	86
			#2														14,388	39
OVERSEAS 11	1+1	348MW	#1														6,820	100
OVERSEAS 12	1+1	360MW	#1														6,820	100
OVERSEAS 13	1+1	430MW	#1														12,650	93
DOMESTIC 2	1+1	390MW	#1														16,045	189
OVERSEAS 13	1+1	390MW	#1														5,134	54
OVERSEAS 14	1+1	392MW	#1														5,350	60
OVERSEAS 15	1+1	720MW	#1															
OVERSEAS 16	1+1	1133MW	#1															
OVERSEAS 17	1+1	387MW	#1															
OVERSEAS 18	2+1	750MW	#1															
OVERSEAS 19	1+0	237MW	#1															
OVERSEAS 20	1+0	237MW	#1															
OVERSEAS 21	1+1	3753MW	#1															
OVERSEAS 22	2+1	775MW	#1															
OVERSEAS 23	1+1	397MW	#1															
OVERSEAS 24	1+1	374MW	#1															
M701F TOTAL	61																794,462	7,534
"F" SERIES TOTAL	119																1,885,041	20,868

Mitsubishi "F" series gas turbines

Performance-ISO	M501F3	M701F3
Gross Power Output, MW	185	270
Combined Cycle Output*, MW	280	398
Combined Cycle Efficiency*, LHV%	57	57
Air Flow, kg/s	453	651
Pressure Ratio	16	17
Turbine Speed, rpm	3,600	3,000
Number of Compressor Stages	16	17
Number of Combustors	16	20
Number of Turbine Stages	4	4

*:Single-shaft, one GT, one ST